



# Generation Forecasting Service

Provided by HyMet Inc. using the Flogen model

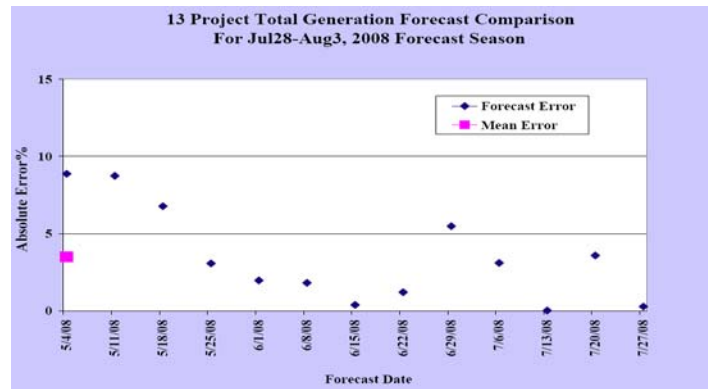
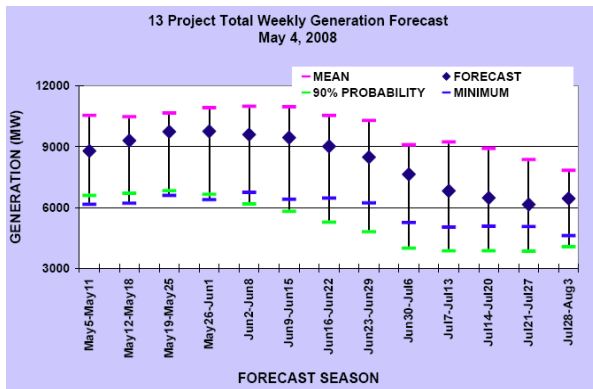
RELIABLE FORECASTS OF POWER GENERATED BY FEDERAL HYDRO PROJECTS

Each day thirteen federally owned and operated hydroelectric projects on the Columbia River produce an average of 8700 MW annually. The energy production can vary greatly as the system operation responds to changing hydrology, non-Power requirements, electricity demands and energy market values.

Our Forecasting Service provides accurate, up-to-date projections of the hydroelectric energy from these projects in the days, weeks and months ahead.



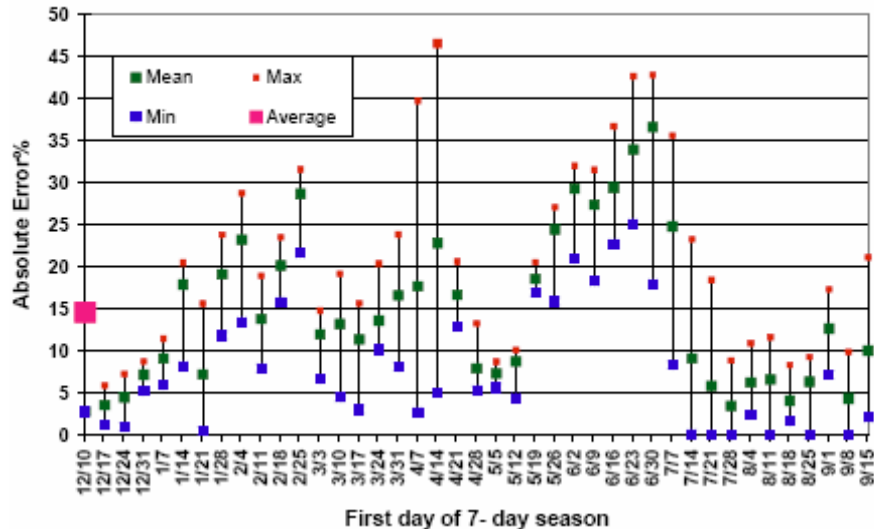
The massive Grand Coulee dam, whose controllable reservoir capability contributes to the uncertainty in regional hydro generation, can generate nearly 6,500 MW of power.



- WEEKLY AND MONTHLY-FORECASTS THROUGH THE END OF WATER YEAR
- STATISTICAL CONFIDENCE LIMITS, HISTORICAL ERROR RECORD
- R-SQUARED PROVIDED WITH EACH FORECAST
- FORECASTS AVAILABLE FOR 1 TO 300 DAYS IN ADVANCE FOR A WATER YEAR

- ACCURCY: AVERAGE ABSOLUTE ERROR FOR ONE WEEK FORECAST DURING THE 2008 SEASON WAS 15%

## 2008 Water Year Generation Forecast Comparison of Weekly Forecasts



Mailing address: HyMet Inc. 19001 Vashon Hwy SW ,Suite# 201 Vashon, WA 98070

Phone: 206-463-1610 Fax: 206-463-2263

[www.hymet.com](http://www.hymet.com)

Email: [hymet01@gmail.com](mailto:hymet01@gmail.com) ; [birbal@hymet.com](mailto:birbal@hymet.com)